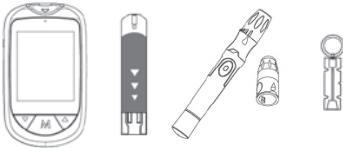


3. Testing your blood glucose

Before collecting a drop of blood, please regard the following instructions:

- Wash your hands with warm, clean water and dry completely before testing.
- Place the lancing device on the side of your finger or alternative sites (please regard the passage „Alternate Site Testing (AST)“ in the operation manual.
- For a well blood circulation, please massage the skin on the puncture side until it feels warmly.



For performing a blood glucose test, you need the Glucofine® Pro meter, test strips, lancing device and sterile lancets.

1. Firmly insert the test strip into the meter test port to power on.
Please wait until the display shows „“ and „“.
2. Please select a suitable measuring mode by pressing the button .
3. Collecting a drop of blood
Please use the prepared lancing device to puncture the selected side. The now obtained drop of blood should be 0,5 µl at least (approximate visual size of the blood drop:).



4. Applying the blood sample
Place the top edge of the blood glucose test strip to your blood drop. As soon as the confirmation window is completely filled with blood, the meter starts measurement. This procedure takes 8 seconds and will be showed by count down the digits from 8 to 0 on the display. Do not take off your finger until you hear a beep sound.



5. Reading the measuring results
The result of your blood glucose test will be displayed after 8 seconds (count down from 8 to 0 on the display). The symbol „“ or „“ shows if your test result is within your target range. The result will automatically be filed in the meter memory.

6. Ejection of the used test strip
Please remove the used test strip by actuating the test strip ejector into a suitable container for disposal.



Warning:
Please dispose used lancets and test strips carefully to avoid infections.

You find further important information for using and disposal of the test strips and lancets in the operation manual and in instruction manual of the lancing device.

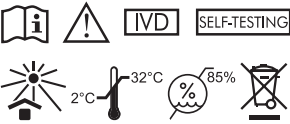
4. System messages

Message	Explanation		
Lo	<20 mg/dL (1,1mmol/L)		
LOW	20 - 70 mg/dL (1,1 - 3,9 mmol/L)		
	AC	PC	Gen
	71 - 129 mg/dL (3,9 - 7,2 mmol/L)	71 - 179 mg/dL (3,9 - 9,9 mmol/L)	71 - 129 mg/dL (3,9 - 7,2 mmol/L)
HIGH	AC	PC	Gen
	130 - 239 mg/dL (7,2 - 13,3 mmol/L)	180 - 239 mg/dL (10 - 13,3 mmol/L)	130 - 239 mg/dL (7,2 - 13,3 mmol/L)
KETONE?	≥ 240 mg/dL (13,3 mmol/L)		
Hi	> 600 mg/dL (33,3 mmol/L)		

Note:
The values in the lines printed cursively are only valid for the target ranges presetted by the manufacturer and will possibly be replaced by your personally adjusted values.

TaiDoc Technology Corporation
B1-7F., No.127,Wugong 2nd Road, Wugu Dist.,
24888 New Taipei City, Taiwan
www.taidoc.com

MedNet EC-REP GmbH
Borkstraße 10, 48163 Münster
Germany



METRADO GmbH
Auf Pfuhlst 1, 66589 Merchweiler
Germany
Tel. +49 (0)6825 95 2278-0
www.metrado.de

GFP-QR-EN-MTR Rev.2024-07-31

Glucofine® Pro

Blood Glucose Monitoring System

Quick reference



Glucose[®]fine Pro

Blood Glucose Monitoring System

Dear customer,

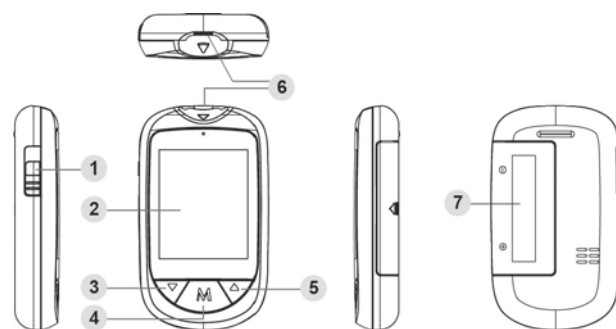
Thank you for choosing the Glucose[®]fine Pro Blood Glucose Monitoring System.

We understand that self-testing of blood glucose level provides a way to control your diabetes and may give you peace of mind by testing regularly. As a result Glucose[®]fine Pro was developed to provide you with a fast and accurate reading with a convenient and simple process.

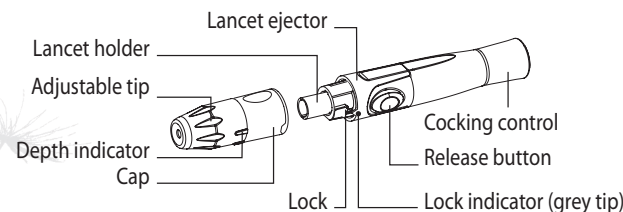
This quick reference supports you in setting and using your meter. Please read it carefully to ensure a proper function and safe measurement.

Please note: This is only a quick reference and it doesn't replace reading carefully the manual and all instructions for use and information contained in the meter set.

Meter overview



- 1 Test strip ejector
Sidewise slider for ejection of the used test strips.
- 2 Display screen
- 3 Down Button (▼)
- 4 M Button
Enter the meter memory, save settings and silence a reminder alarm.
- 5 Up Button (▲)
- 6 Test strip port / Communication port
Insert test strip here to turn the meter on for testing.
Connect strip port cable for data transmission.
- 7 Battery compartment



1. Basic settings of the meter

Please make all basic settings before using the meter for the first time or after changing the battery.



Entering the Setting Mode

Please make sure that there is no test strip inserted and the meter is powered off. If necessary press the M-Button for 3 seconds to power off. To enter the setting mode, please concurrently press the buttons ▲ and ▼ for 3 seconds.

Setting

At first, the year will flash. After pressing and releasing either ▲ or ▼ buttons to set the year (2012 - 2099), confirm with the M-Button.

After setting the year you get to the next parameter. By repeating the just described procedure, you can successively adjust all settings of the menu.

The chronology of the menue-settings is, as follows:

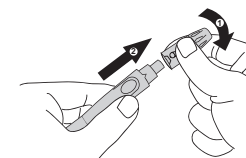
Year / month / day / time format / time / measuring unit / personal target ranges / sound / memory / alarm (you can set 4 alarms.)

Note:

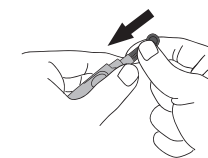
You can exit the setting mode at any time by concurrently pressing the buttons ▲ and ▼ for 3 seconds.

Please read the detailed explanations regarding the settings in the operation manual.

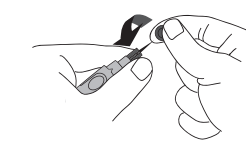
2. Using the lancing device and lancets



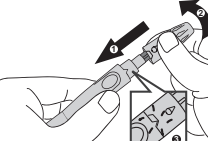
1. Unscrew the cap of the lancet device by turning it counter-clockwise while holding the base firmly.



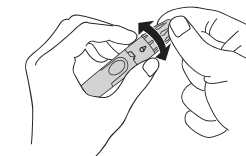
2. While holding the lancet carrier, insert a new sterile lancet.



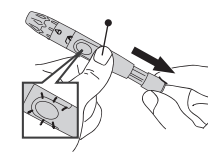
3. Twist the cap of the lancet off.



4. Put the cap of the lancing device back on and turn it clockwise until it snaps in audibly.



5. Turn the tip until the mark (white drop) points to the requested penetration depth. You can adjust 6 penetration depths.



6. Hold the tip firmly in one hand then pull out the cocking control with the other hand until a „click“-sound resonates. The release button turns red as soon as the lancing device is cocked.